

## The Debate II

## Missing!

## Lost Sculptures from the Eshmun Sanctuary near Sidon (Lebanon)

By Rolf A. Stucky and Jean-David Cahn

Museums, art dealers and collectors alike have a profound appreciation for our cultural heritage and are committed to protecting and preserving it. The past decades have seen the development of numerous instruments to ensure that collecting and trading in works of art is in line with these ethical principles. These include, amongst other things, the practice of having works of art offered for sale checked by the Art Loss Register and/or screened against Interpol's database of stolen works of art. This is important as attempts are repeatedly made to introduce stolen art works into the legitimate art market.

However regrettable such incidents may be, they can also be seen as an opportunity, because if the parties involved react correctly, they may bring about the restitution of the artworks to their rightful owners. A prerequisite for this is that it should be generally known which objects are missing. The conversation between Prof. Dr. Rolf A. Stucky and Jean-David Cahn on the restitution of sculptures from the Eshmun Sanctuary near Sidon (CQ 3/2019, pp. 4-6), however, showed clearly that information about missing works of art is often difficult to access.

For this reason we have, with the permission of the Lebanese Directorate General of Antiquities, decided to publish the following pages illustrating sculptures and reliefs from the Eshmun Sanctuary that disappeared during the Lebanese Civil War (1973-1990) and have remained untraced since then. It is the first time that such a joint endeavour between a government authority and the trade has taken place and we hope that this proactive approach will set a new trend.



D4



C16

## Contact

Should you be aware of the location of any of the sculptures illustrated here, you are kindly requested to contact one of the following persons or institutions:

**Sarkis el-Khoury**, Director-General of Antiquities of Lebanon, Beirut: [sarkis.khoury@dga.culture.gov.lb](mailto:sarkis.khoury@dga.culture.gov.lb)

**Hind Younes**, Directorate General of Antiquities of Lebanon, Beirut: [hind.younes@dga.culture.gov.lb](mailto:hind.younes@dga.culture.gov.lb)

**Directorate General of Antiquities of Lebanon**, Beirut: [info@dga.culture.gov.lb](mailto:info@dga.culture.gov.lb)

**Prof. Dr. Rolf A. Stucky**, Emeritus, Department of Classical Archaeology, University of Basel: [rolf-a.stucky@unibas.ch](mailto:rolf-a.stucky@unibas.ch)

The numbers below the illustrations refer to the catalogue entries in Rolf A. Stucky, *Die Skulpturen aus dem Eshmun-Heiligtum bei Sidon*. Antike Kunst, Beiheft 17, 1993. The letter-number combinations correspond to those in Rolf A. Stucky, *Das Eshmun-Heiligtum von Sidon. Architektur und Inschriften*. Antike Kunst, Beiheft 19, 2005.



17



160



161



B42



162



179



198



214

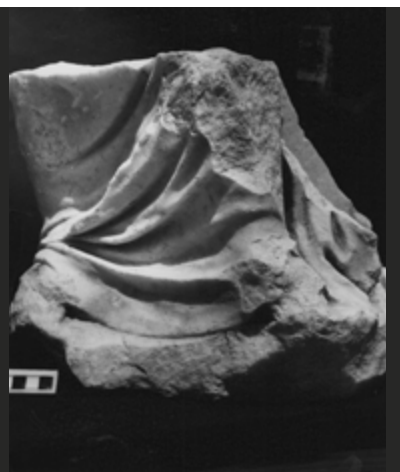




85



86



87



85-87 reconstruction



147



74



75



74-75 reconstruction



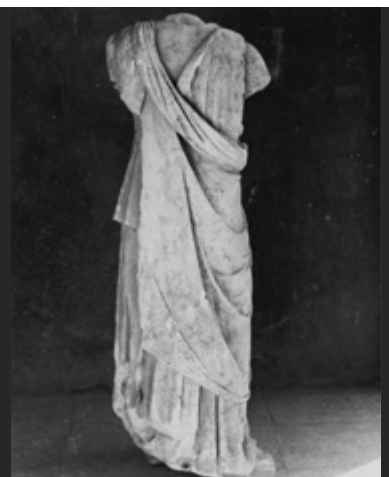
137



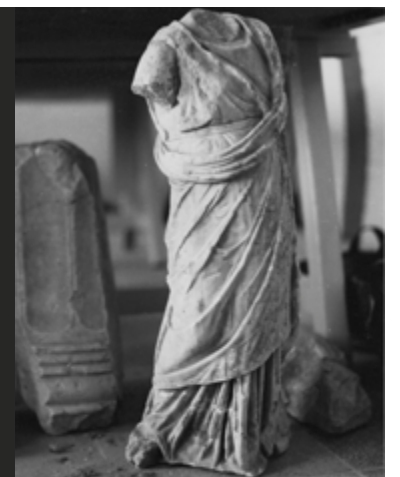
143



146



193



250



99



103



114



118



183



B34



249



D1



51



248